

# Hennock Primary School Newsletter

## *Message from the Head*

We have had meetings over the past few weeks with members of the PTFA and the outdoor space project continues to move forward. It is very important that the architect gets your views and those of our children. If you get chance to complete the questions sent out via a forms link and our mood board over the weekend with your child that will be brilliant. We would really like your thoughts and ideas to help shape the project. Many thanks to members of the PTFA for all their efforts and hard work supporting the school with this.

I look forward to our clubs starting on Monday and might see some of you at the gardening club supporting us to make a difference to our school grounds.

Wishing you a lovely weekend. Mrs Clarke

## Ash Class



We have had a fun, but busy, two weeks in Ash Class!

In Maths, the children completed their unit on Shape. I was so impressed by their End of Unit results, showcasing how much they have learnt! We are now beginning our new unit on Position and Direction.

In English, we are finishing off our unit based on *Flood*. This has been an interesting text to study as it is a story with no words. The children have been creating a wide range of adventurous vocabulary and noun phrases, as well as pieces of dialogue to help bring this story to life!

In DT, we have been exploring pneumatic systems and using them to create talking boxes! They used syringes, tubing, tea boxes and balloons to construct their creations.

In Science, the children recreated Aristotle's investigation to prove that the Earth is the shape of a sphere. They observed that as an object moved further away on a flat surface, the whole object got smaller. However, when an object moved around a sphere, the bottom of the object disappeared first, and the top last. This reflects what Aristotle observed when he watched ships disappear over the horizon of the ocean! This helped him to conclude that the Earth is a sphere.

Have a lovely weekend everyone, and remember to keep rehearsing your lines for the production!





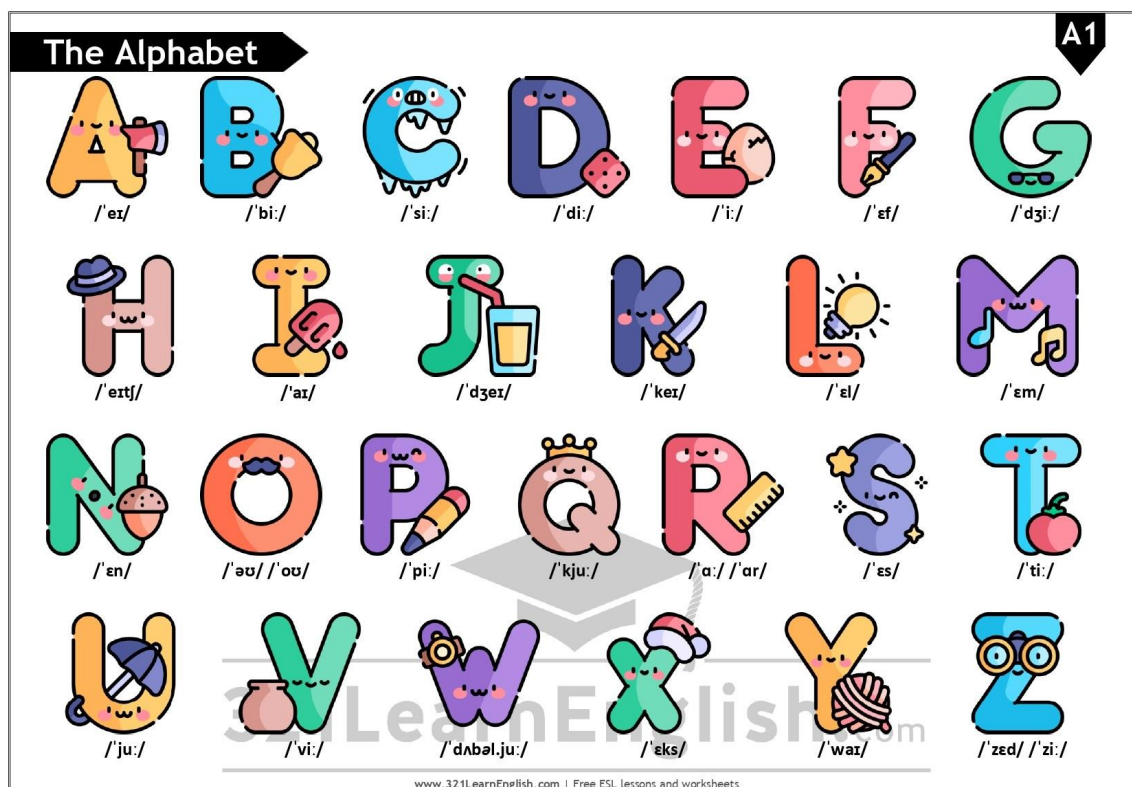


## Birch Class



It's been a wonderful fortnight in Birch class with us working furiously to an exceptionally high standard so well done Birch!

Special mention to the fantastic Year 4s who this week completed their Multiplication Timestable Check last week. They have been busy revising furiously. Well done all!



In English, we are building towards planning a Paddington story, which the class are very excited about. In the lead up, we have been looking at writing in the first person, using correct speech punctuation and phrases to describe how the speech is being spoken and we have been looking at present participles (I know very tricky).

Alongside fantastic work in English, the class have been working very hard on their Maths unit of time, which is notoriously tricky to master and understand however, I certainly feel there have been a number of eureka moments this week, which has been really great to be part of.

Our next unit is on decimals, I am looking forward to seeing how the children get on.



## Wider Curriculum



In Science, we have been learning about classification keys and understanding how they work. We have discussed single and multi stage classification and we used a classification key to identify specific species of animals and then did additional research to find out more about them.

In Geography, we researched some of the U.K.'s most well known features of Geography. Including Ben Nevis, Lake Windemere and Mount Snowdon.

In P.E. we have been working on sprinting and hurdling in athletics, which is all great preparation for our upcoming Sports Day in Enrichment week.

As part of our final Art piece, we completed detailed botanical sketches of pieces of fruit and then used watercolours to add further detail.

### **Upcoming Events in Birch**

Enrichment Week 7th July - 11th July - Details to follow

### Home learning -

Reading for at least 10 minutes daily.

Please practice for at least 10 minutes 3 times a week

Spelling - Spelling checks are on Friday

Times tables - Times table checks are on Tuesday

### Willows and Reception Class



What a busy two weeks it has been! It was lovely to see so many of you at parents evening, thank you so much for coming in and celebrating work that you were proud of.

We have been loving this glorious weather and being able to enjoy more time outside. a reminder though that hats and sun cream are essential during these sunny months.



In English, KS1 have been we have been using conjunctions to create multiclaue sentences. The children worked hard to use exciting Tier 2 vocabulary in their sentences. We then planned our class story.

In geography, we compared life in the UK to life in Somalia. The children were fascinated by the very different environment and lifestyles.

In Maths, we have continued are learning with fractions and we have been exploring quarters, thirds and wholes. Tiny has been trying to catch us out with his maths problems but we have been using our reasoning and problem solving skills to explain our answers and whether he is right or not.

In Science, we have looked closely at how humans can harm or destroy habitats as well as ways in which they can help. We explored our school grounds and found ways we help or could help encourage habitats for animals. We will be learning that living things need space to grow and reproduce and that producing offspring is important for all living things for their continued survival.

We have been working hard on our reading and thank you with the continued support with this at home, it really does make a big difference.

Have a great weekend and enjoy the sunshine!





## Saplings



We are reading "The book of bugs" The children are learning all about minibeasts and are enjoying using descriptive word to describe them, we even went on a minibeast hunt

In maths we are subsidizing up to 3, 4 and 5 and they have been doing so well.

In PHSE we are talking about the best we can be within our friendship groups

In phonics, the children are learning to use phonetic sounds with 3 letter words. Many of the children are blending sounds of 4 and 5 letter words, well done Saplings.

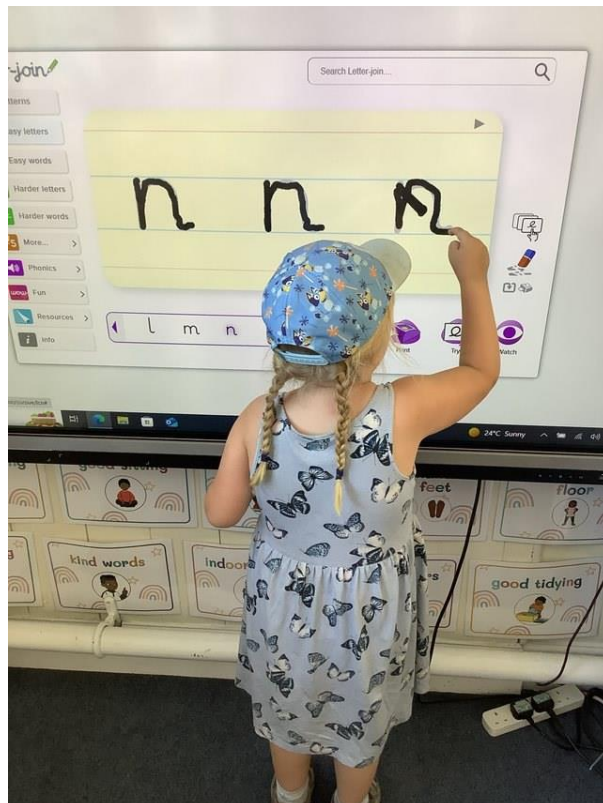
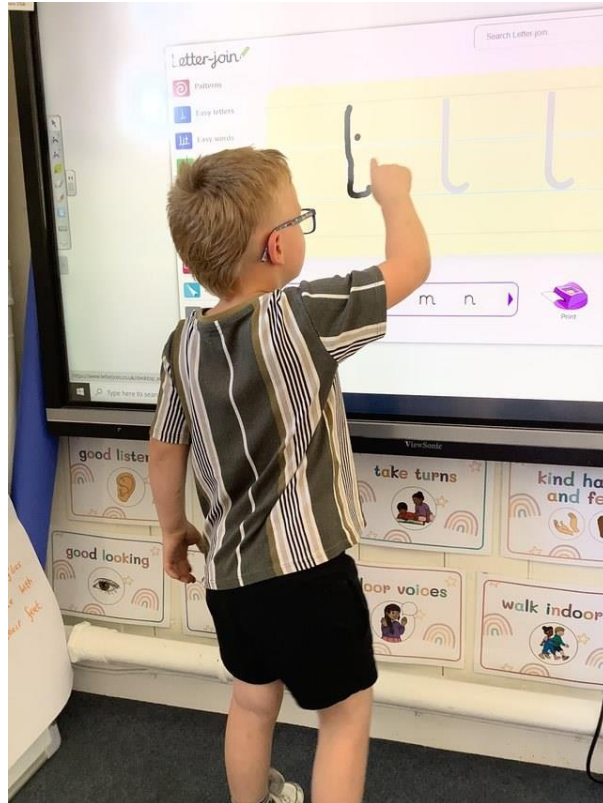
We have been enjoying the good weather with lots of water play and some ice lollies!

Have a lovely weekend.

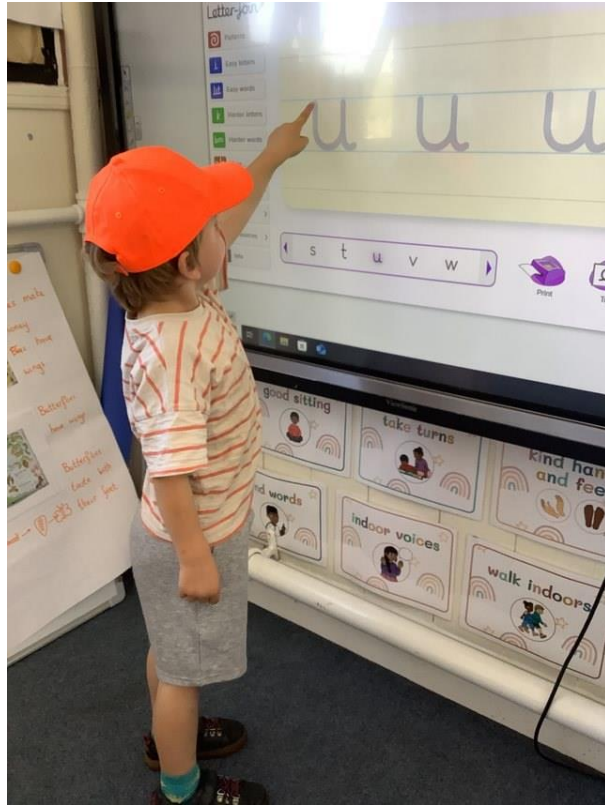












## Toddler Group!







Come and join us for Toddler Group

Join us for a chat, fun, tea and cake! This week we played outside in the sunshine with lots of water games!

Running from 9.15-10:30am every Wednesday morning.

Tell your friends and family to spread the word.

£1.50 a session. Hennock Primary school. Please call or email if you have any questions;

adminhennock@thelink.academy

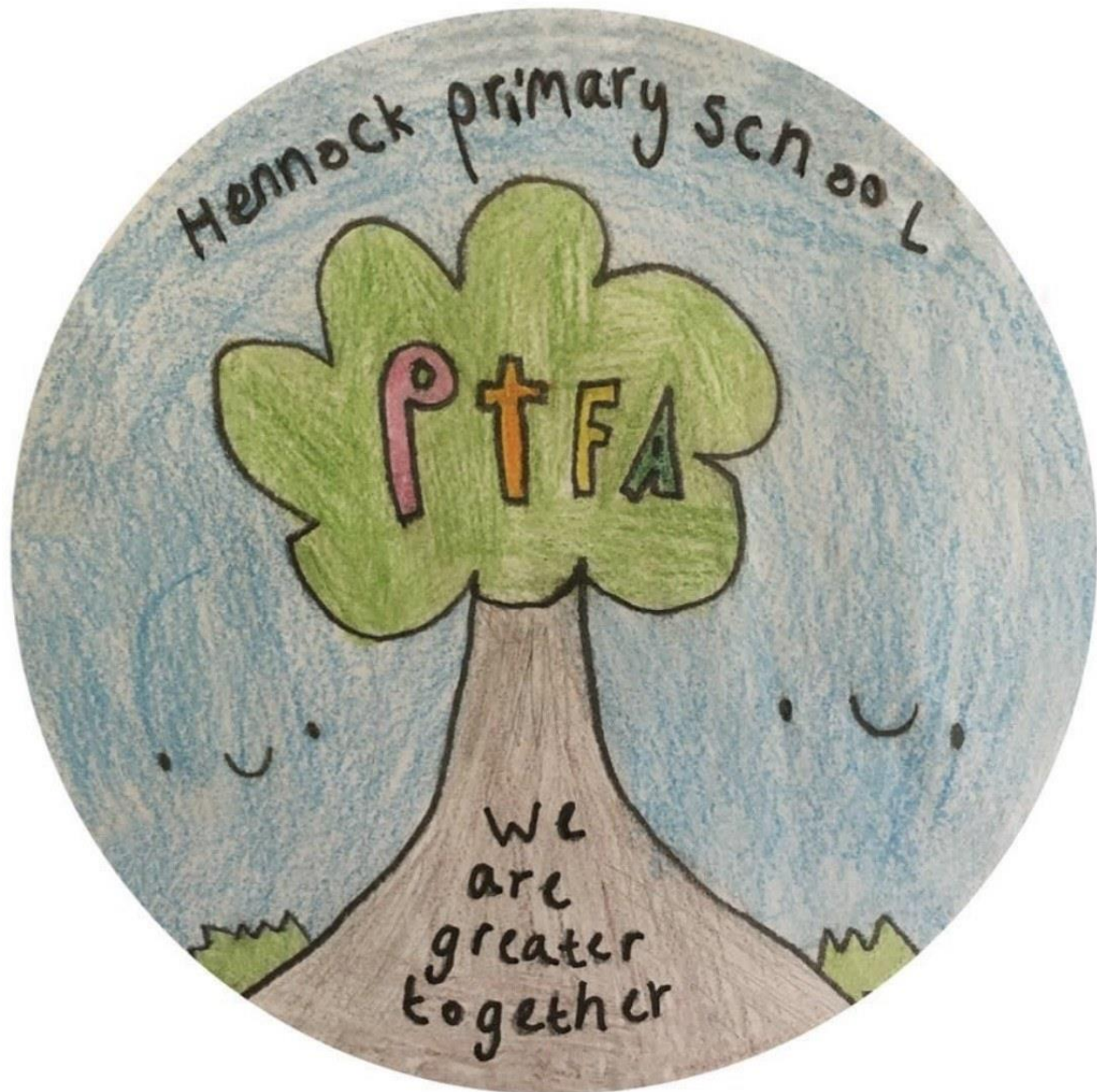
01626 833233.

We look forward to welcoming you to our school.





## PTFA Message



Dear all,

Don't forget to fill in your Playground feedback/mood board form! Exciting changes coming! The PTFA will be running games stalls at the Teign Village Fete tomorrow. It would be lovely to see you all there.

Deb (Amelia's Granny) has some lovely summer dresses in the 'pre-loved uniform' stash. Please email if you would like her to bring any in!

Many thanks for your support.

Best wishes

Sarah and team

Hennockptfa@gmail.com

## *Star of the Week*



### **13th June**

**Ash:** Rudy **Birch:** Layla **Willows:** Ronnie

**BC:** Asa **ASC:** Millie

#### **Dojo Points:**

**Ash:** Tommy

**Birch:** Phoebe

#### **Achievosaurus:**

**Playground Hero:** Amelia

**Values Star:** Lyric

### **20th June**

**Ash:** Jackson **Birch:** Lucy **Willows:** Benji

**BC:** Amelia **ASC:** Aiden

#### **Dojo Points:**

**Ash:** Fyrstan, Nancy and Mabel

**Birch:** Sophie

#### **Achievosaurus:**

**Playground Hero:** Jackson

**Values Star:** Asa

## Key Dates

**PE with Mr Pierce Every Monday**

**Willows - Friday**

**Birch - Fridays**

**Ash - Wednesdays**

- **Weekly Swimming for Ash Class starting Wednesday 4th June**
- **Whole School Photo's Tuesday 24th - Please bring a jumper/Cardigan**
- **Transition Morning Friday 27th June**
- **Sports Day 7th July (with a back up of 14th July in case of poor weather)**
- **Enrichment Week W/C 7th July**
- **Year 5 Taster Day at Teign School - Thursday 10th July (More info to follow from Teign School)**
- **KS2 Production 16th and 17th July - more information to follow**
- **Year 6 Transition Days at Teign School - Thursday 26th & Friday 27th July (More info to follow from Teign School)**

## School Attendance

***Attendance this fortnight:***

**Whole School 97%**

**Ash 97.8%**

**Birch 96.9%**

**Willows 96.4%**



## Attendance Matters



**PENALTY NOTICE FINES FOR SCHOOL ATTENDANCE ARE CHANGING**

**1 FIRST OFFENCE**  
The **first** time a Penalty Notice is issued for Term Time Leave or Irregular Attendance the amount will be: **£160 per parent, per child. This will be reduced to £80 per parent, per child if paid within 21 days.**

**2 SECOND OFFENCE (WITHIN 3 YEARS)**  
The **second** time a Penalty Notice is issued for Term Time Leave or Irregular Attendance, the amount will be: **£160 per parent, per child, to be paid within 28 days. No reduced rate will be offered.**

**3 THIRD OFFENCE AND ANY FURTHER OFFENCES (WITHIN 3 YEARS)**  
The **third** time an offence is committed for Term Time Leave or Irregular Attendance a Penalty Notice will not be issued and the case will be presented straight to the Magistrates' Court.  
**Magistrates' fines can be up to £2500 per parent, per child. Cases found guilty in Magistrates' Court can show on a parent's future DBS certificate due to failure to safeguard a child's education.**



## Safeguarding



### Key contacts and useful links

Front Door (formerly MASH) main number: 0345 155 1071

Children's Social Care Emergency Duty Team (out of hours) – 0845 6000 388

Front Door email: [mashsecure@devon.gov.uk](mailto:mashsecure@devon.gov.uk)<sup>1</sup>

Our Safeguarding Lead is Sarah Clarke and our Deputy Safeguarding Lead is Issy Fraser. If you are concerned about a child's wellbeing, please contact the school or in non-school hours contact Front Door (formally known as MASH) on

**0345 155 1071**

---

<sup>1</sup><mailto:mashsecure@devon.gov.uk>