



Hennock Primary School Newsletter

Message from Academy Head

We have been doing a lot of work on our new Learning Behaviours over the last few weeks and I have seen much evidence of these behaviours in practice. I was delighted when Boe in Ash came to see me to say that she had written a poem about resilience and asked if she could share it in assembly. With her permission I am sharing it with you too.

Never Give Up by Boe

When you have a dream, never let it go

Give it all you got, never let it go

Never let anyone put you down

Just believe in yourself and give it all you got

When you have a go, if you do not get it straight away then have another go

You can do it if you work hard and believe in yourself

If someone says that you cannot do that say 'I may not get it but I will give it all I have'

So do what you want and bring all your talents too

If you do not achieve it try again a way that's new

You are always brilliant and you are loved

So never let go, you can do it, be who you are and never change who you are to be popular,
just be yourself and never change who you are inside.

Sarah Reddington

Academy Head

Hennock Primary School

Link Academy Trust

Ash Class



We have had a lovely two weeks in Ash Class!

In English, the children have been working extremely hard on their Final Write. They have been creating information pages all about modern inventors and their inventions. I am so impressed with how they have taken all the skills we have learnt in this unit and applied it to their writing.

In Maths, we have concluded our work on Fractions and begun our unit on Decimals. So far this week, the children have been exploring place value within number with up to three decimal places.

In Science, the children have been exploring sexual and asexual reproduction in plants. They dissected daffodils and identified all the different components of the flower that enable it to reproduce.

In Art, we have continued exploring Inuit artwork. The children created soap carvings and stencils inspired by Inuit artists and created pieces relating to animals native to the polar regions.







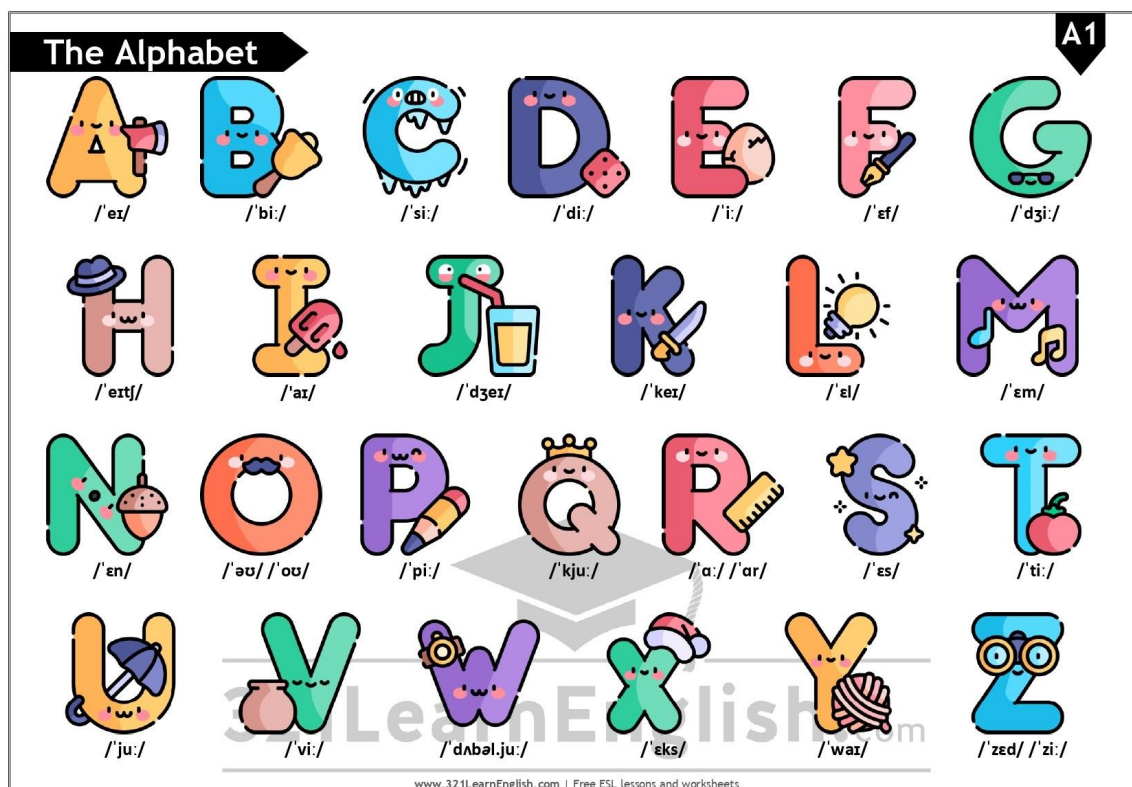
Birch Class



It's hard to believe that we only have 2 weeks left of this Spring half term and what a busy half term it has been.

It's not over yet though as we begin to finish our current units but we also have an upcoming class excursion, which will form part of our unit in English and Art.





This week in English we have been focusing on grammar and the application of different features in the story of The Beasties including noun phrases, adverbial phrases and subordinate clauses.

We have now begun the planning phase of our unit where children are combining ideas to create a plan following one of The Beasties' story structures which they will use to write their own story. I always love this part of the unit as children can focus on their targets as well as apply what they have learnt to produce their own creative pieces.

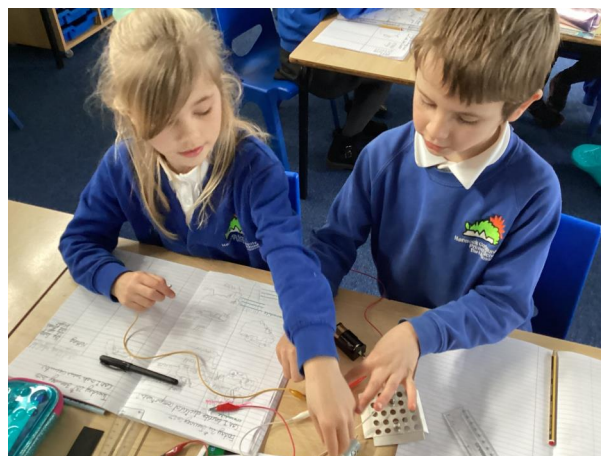
In Maths, we are coming to the end of our unit on Multiplication and Division. The children have been tackling really complex calculations including dividing a number using 'flexible partitioning' where they apply their timestable knowledge to solve divisions, using related calculations to solve problems and now they are dividing 3 digit numbers with a 1 digit number which includes regrouping from the hundreds to the tens or the tens to the ones as the number is not divisible.

The next step will be dividing with remainders, which is one of my personal favourites.

Wider Curriculum

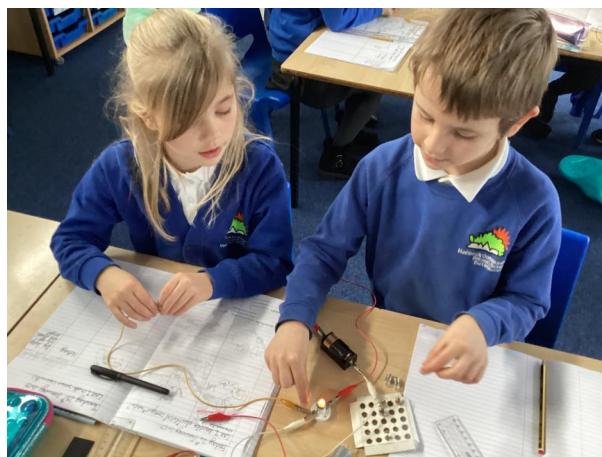


This week in Science the children were exploring creating their own series circuits using lamps, bulbs, wires, motors. It was a hard concept to understand and we had some quite creative wire creations in order to get the bulb to illuminate. Eventually though we found the correct combination and began adding switches and what happened when this was added to the circuit.



In Art, we explored 'atmospheric perspective' where we used 4B and water colours to create perspective. We used darker colours in the foreground and lighter colours in the background with a medium shade in the middle ground.

It was interesting to use both 4B and watercolours and the effect it had on the paper and I am looking forward to seeing how they adopt these skills in their final piece.



We had a wonderful lesson with Mr Saturley, Mrs Luxton's former Music teacher, who has penned the ideas of the class into their own song, which we will be performing for you very soon. We used the glockenspiels as well to create our own instrumentals too.



Upcoming Events in Birch

P.E. every Monday and Friday - please wear P.E. kit on these days.

Home learning -

Reading for at least 10 minutes daily.

Please practice for at least 10 minutes 3 times a week

Spelling - Spelling checks are on Friday

Times tables - Times table checks are on Monday

Optional Homelearning projects- in Homelearning books

Willows and Reception Class



We have had a very busy fortnight in Willows Class, Kicking off with our trip to Exeter Mosque. The Mosque itself was incredibly welcoming and the children were able to explore the different areas that Muslims use within the venue. The children were able to learn lots of facts and see beautiful artefacts and artwork first hand within the religious setting. We were all surprised by just how soft and squishy the prayer carpet was too! The children were exceptionally well behaved and were a credit to the school with how well they responded to hearing and seeing new and different things for lots of them so well done Willows! Aside from our RE learning we have been getting stuck into the nitty gritty of sentence writing in English and have been spending an extended amount of time really establishing what a sentence is and how to correctly form them. In Maths we have now finished our shape topic and are moving onto addition and subtraction of numbers up to 100. In Science we have been revising our plant knowledge and starting to learn about the key features of plants and why they are useful.

In EYFS we have been enjoying and exploring our new book "Little Kids Big book of Dinosaurs" and have been recapping and revising our knowledge of Non-Fiction books. We are beginning to get very excited as our new Dinosaur inspired Role play is beginning to take shape, we cannot wait to get stuck into our imaginative play in there. In Maths we have

been continuing with our knowledge of numbers to 10 and practicing our understanding and comprehension of more and less. Within our Continuous provision this week we have been exploring all things Chinese New Year. We have particularly enjoyed practicing picking up "noodles" with chopsticks to build strength in our finger and hand muscles, and exploring a range of creative skills through Chinese inspired artwork.

Have a lovely weekend and look forward to sharing more exciting learning news with you in the last week of term.









Saplings



Saplings have been busy over the past fortnight, our book is "First Big Book of Dinosaurs" and the children have been discussing the different characteristics of dinosaurs; like brave, fierce, shy, timid, gentle...

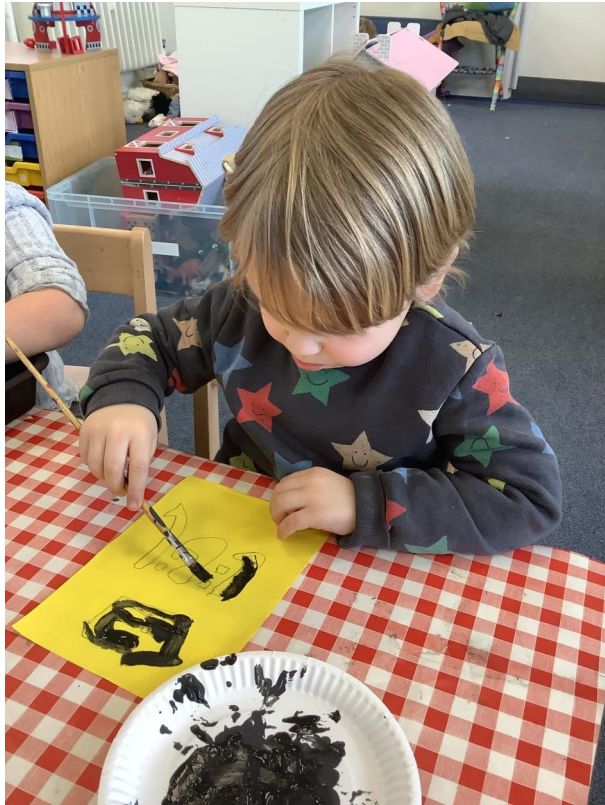
We have also been celebrating Chinese New Year and all the children have made a Chinese lantern and some of the children have also painted their animal name in Chinese writing.

The children have been discussing features of a non-fiction book, they have been encouraged to explore and share features of non-fiction text, contents pages, finding facts and learning new vocabulary.

The children have really enjoyed creating repeating patterns of their own with different materials.

Star of the Week - All of Saplings









Toddler Group!



Come and join us for Toddler Group, running from 9.15-10:30am every Wednesday morning.

This week we looked at cook books and played at making cupcakes, we also had all the games out and Operation was a big hit!

Tell your friends and family to spread the word.

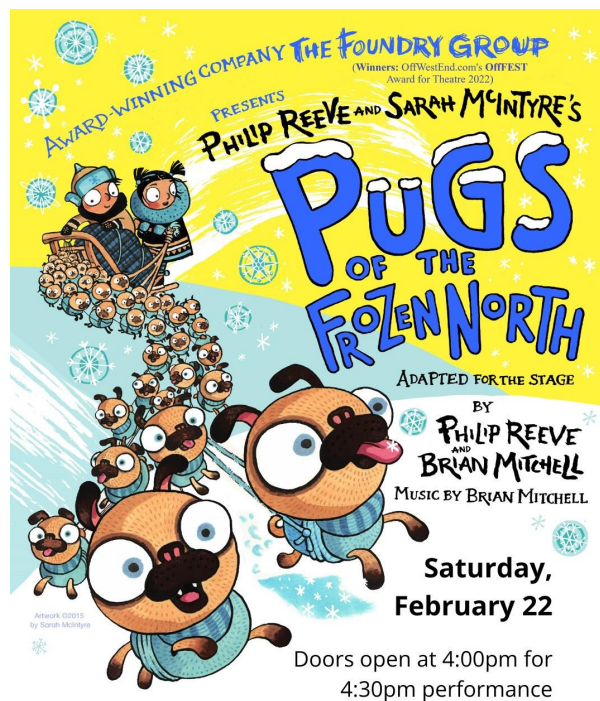
£1.50 a session. Hennock Primary school. Please call or email if you have any questions;

adminhennock@thelink.academy

01626 833233.

We look forward to seeing you and your friends there! We have already made some new friends.

Pugs of the Frozen North: The Musical

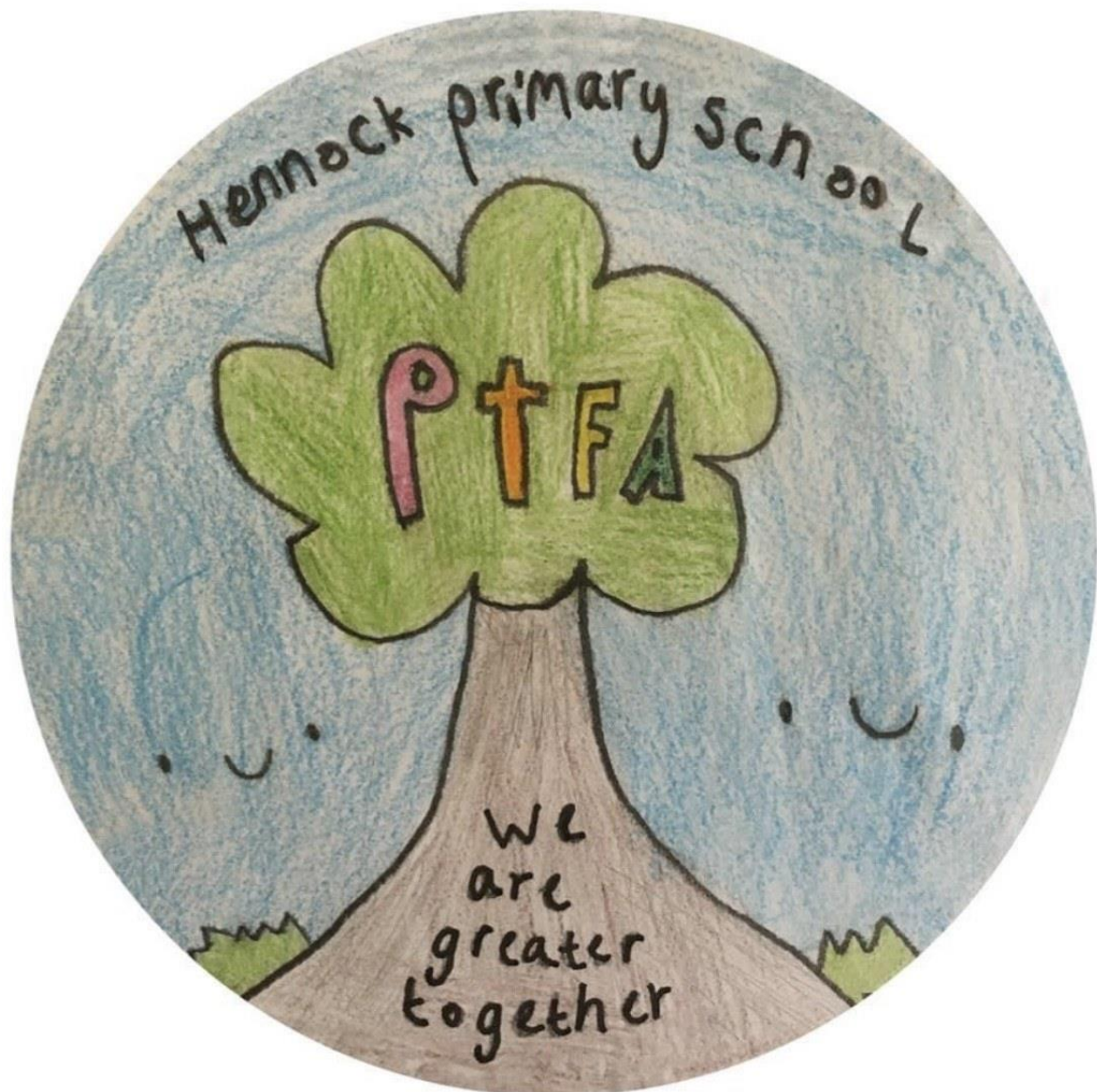


Saturday, 22 February; doors open at 4pm for a 4:30pm performance

Hey, Reeve & McIntyre fans!! *Pugs of the Frozen North* is heading to Bovey Tracey for a very special, one-day-only musical extravaganza this half-term! Join us at the Riverside Community Centre on Saturday, February 22, for a unique, hands-on collaboration between the authors and the award-winning theatre company, The Foundry Group. With songs by Brian Mitchell (composer of *Lord God* and *The Ministry of Biscuits*, co-written with Philip Reeve), a cast including Emma Haworth (*A Christmas Carol*) and Murray Simon (*Lord God*), designs by Reeve and McIntyre themselves, and a chance for younger audience members to play the eponymous, yipping sleigh dogs, *Pugs of The Frozen North* promises fun and excitement for all the family. Suitable for 5+.

Tickets are £7 (adult) | £5 (child) | £20 (group). Bonus: Reeve & McIntyre will be signing books before and after the show. Purchase your tickets at firstdraftbooks.co.uk/events¹ or directly through <https://www.ticketsource.co.uk/the-foundry-group/t-jznrnl>.

PTFA Message



Dear all,

If anyone would like any Pre loved items of uniform please email the PTFA with your requests and we will see what we have for you to try!

Any ideas for fundraising activities are always welcome and anyone can lead them! It doesn't have to be a PTFA committee member.

¹<http://firstdraftbooks.co.uk/events>

Have a great weekend.

Sarah and Team

hennockptfa@ gmail.com

Communications Team



We interviewed a member of Ash Class who has been enjoying completing their Final Write in English this week!

Q: What is your favourite part about your Final Write?

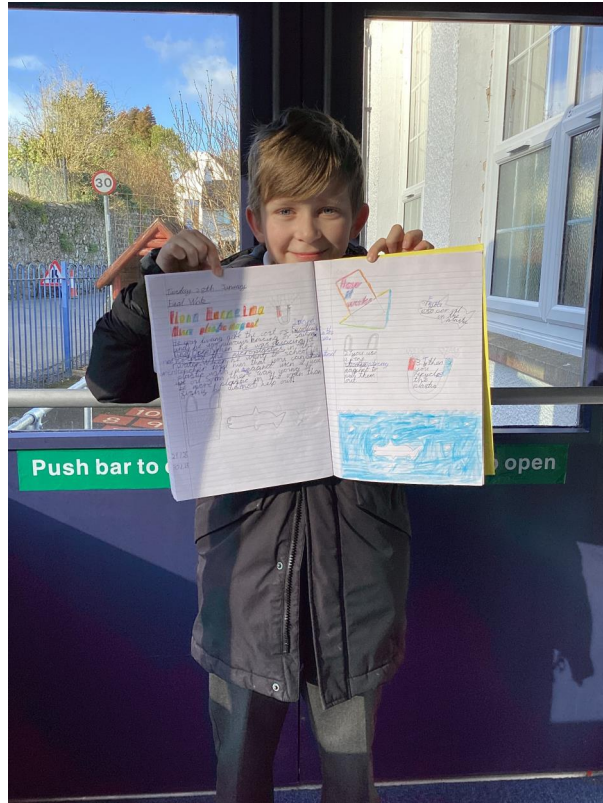
A: I really enjoyed making it look colourful and interesting to look at for my reader.

Q: Are you proud of it?

A: Yes, I have put a lot of hard work into finishing it.

Q: What is your Final Write about?

A: It's an information page all about the inventor Fionn Fearra and his invention to help reduce the amount of microplastics in the ocean.



Star of the Week



Star Learner of the Week:

24th January

Ash: Boe Birch: Sophie Willows: Mikey

Dojo Points:

Ash: Fyrstan Birch: Layla

Achievosaurus: Alice, Amelia

Playground Hero: Lily S

Values Star: Lyric

Star Learner of the Week:

31st January

Ash: Jackson **Birch:** Albert **Willows:** Emilia

Dojo Points:

Ash: Malachi and Myri **Birch:** Lucy

Achievosaurus: Benji, Jess

Playground Hero: Ronnie

Pride of School: Milena

Key Dates

PE with Mr Pierce Every Monday

Willows - Thursday

Birch - Fridays

Ash - Wednesdays

- **5th February; Weight and Measurements for Reception and Year 6**
- **Music with Pat on Thursdays for Ash and Birch**
- **14th February; End of Half Term**

Attendance this Fortnight:

Whole School 95%

Ash 95.1%

Birch 97%

Willows 93.3%

Attendance Matters



PENALTY NOTICE FINES FOR SCHOOL ATTENDANCE ARE CHANGING

1 FIRST OFFENCE
The **first** time a Penalty Notice is issued for Term Time Leave or Irregular Attendance the amount will be: **£160 per parent, per child. This will be reduced to £80 per parent, per child if paid within 21 days.**

2 SECOND OFFENCE (WITHIN 3 YEARS)
The **second** time a Penalty Notice is issued for Term Time Leave or Irregular Attendance, the amount will be: **£160 per parent, per child, to be paid within 28 days. No reduced rate will be offered.**

3 THIRD OFFENCE AND ANY FURTHER OFFENCES (WITHIN 3 YEARS)
The **third** time an offence is committed for Term Time Leave or Irregular Attendance a Penalty Notice will not be issued and the case will be presented straight to the Magistrates' Court.
Magistrates' fines can be up to £2500 per parent, per child. Cases found guilty in Magistrates' Court can show on a parent's future DBS certificate due to failure to safeguard a child's education.

IF YOUR CHILD IS JUST 15 MINUTES LATE
FOR SCHOOL EVERY DAY, IT ADDS UP TO

2 WEEKS

of the school year being missed



Safeguarding



Key contacts and useful links

Front Door (formerly MASH) main number: 0345 155 1071

Children's Social Care Emergency Duty Team (out of hours) – 0845 6000 388

Front Door email: mashsecure@devon.gov.uk²

Our Safeguarding Lead is Sarah Reddington and our Deputy Safeguarding Lead is Issy Fraser. If you are concerned about a child's wellbeing, please contact the school or in non-school hours contact Front Door (formally known as MASH) on

0345 155 1071

²<mailto:mashsecure@devon.gov.uk>