

Hennock Primary School Newsletter

Message from Academy Head

We have had a very busy couple of weeks with trips to Bellever Forest for Ash and the Dyno Climb Centre for Willows, visitors and investigations for all in Science week, a visit from the UK Parliament education team for Birch and Ash and a bake sale today for Comic Relief.

The coming fortnight looks to be just as packed with a trip to Torquay Museum for Ash, trips to Haven Banks activity centre and tracking the River Bovey for Birch, Willows are attending the Link inclusion games, a musical performance for Birch and Ash parents and we will be finishing term with an Easter Celebration at St Mary's.

Once again, thank you to our fantastic PTFA for supporting our trips and specialist music provision. Their fundraising makes a great difference to the enrichment we can offer our pupils and it is greatly appreciated by us all.

Sarah Reddington

Academy Head

Hennock Primary School

Link Academy Trust

[Ash Class](#)



We have had a lovely couple of weeks in Ash Class.

Last week, the children enjoyed taking part in Science Week, during which they completed lots of fun scientific experiments such as exploring ocean density and creating rockets, and met lots of inspirational people working in scientific fields.

This week, we have returned to our normal timetable. In English, the children have begun their Final Write of their narrative unit focused on Michael Morpurgo's *Kensuke's Kingdom*. They are using all the skills they have learnt in their lessons to rewrite Chapter 4 of the story, creating their own character who has washed up alone on an island. I can't wait to read the final results!

In Maths, we have been looking at fractions and decimals and the children have been exploring how to convert numbers between the two and partition decimals in a variety of different ways.

In Geography, we have focused on the physical features of polar landscapes. The children have researched information about icebergs, glaciers, ice fields, boreal forests, tundra and mountains that you find in the polar regions, as well as the wildlife that inhabit them.

In DT, last week the children made homemade bread and compared it to a shop-bought loaf. This week, they have spent time planning the healthy meal that they are going to cook next week! Thank you again with your support in providing them with the ingredients to do this.

On Wednesday, we went on a school trip to Bellever Forest! We were given a tour by a member of the Dartmoor Pony Heritage Trust and we learnt lots about the different wildlife on Dartmoor and how that compares to the polar regions we have been studying in class.









Birch Class

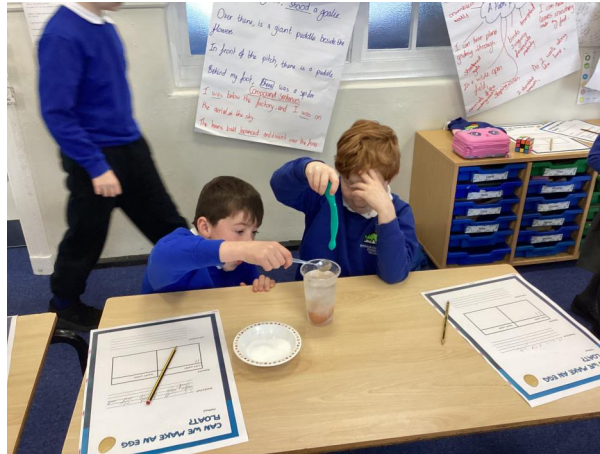


It's been a lovely two weeks in Birch class with Science week being a particular highlight where we met great STEM professionals. The Bat Ecologist and the Tree surgeon were particular favourites.

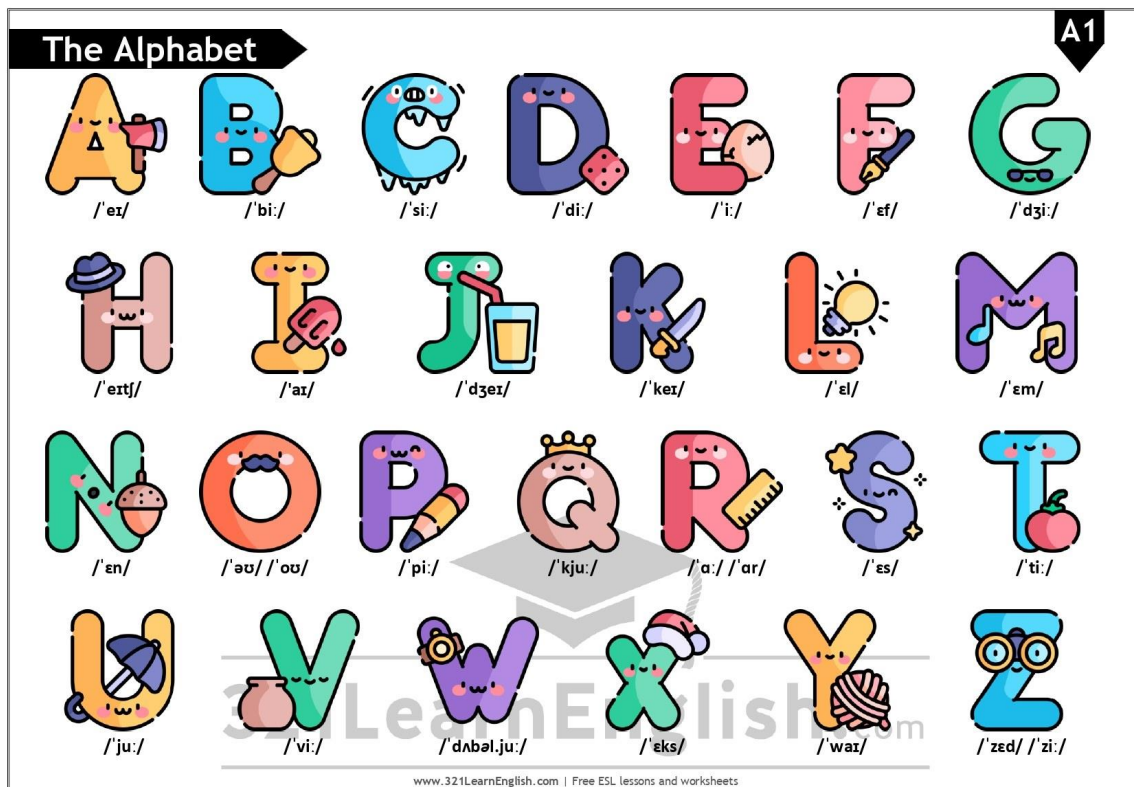
We had a great Science morning on Tuesday where we completed 3 different experiments and investigations.

The children are very excited about their two upcoming trips with Haven Banks being the first one on Tuesday next week and the River trip on the 31st. We are also excited for our upcoming Parent Drop in where we will be showing off our work this term.





English and Maths



This week in English, we completed our poems of A River and the quality of the poems are exemplary and during their lesson on editing we were really focusing on being meticulous with checking our spellings and punctuation.

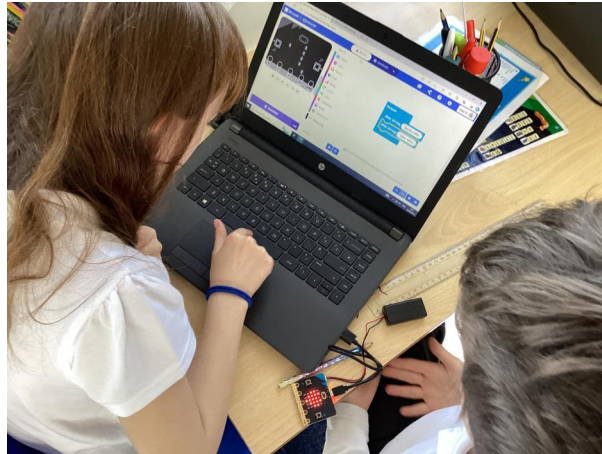
In Maths, we have been fully immersing ourselves in the world of fractions including equivalent fractions and counting beyond 1 whole. The children have been working really hard on this tricky concept.

I am really impressed with the class's resolve on their times tables we have really stepped up our speedy recall and it's showing in their results with everyone progressing. Keep up the good work.

Wider Curriculum



This week in Science, we have begun a project using Micro Bit, which involves using computer programming to control a microbit. The children had a great time getting the microbit to complete different programmes and I am looking forward to seeing the results.



In Art, we began exploring the style of William Morris and the first technique was block printing. We carved pieces of clay and applied them in the style of William Morris. We have embroidery and hemming next.





Upcoming Events in Birch

P.E. every Monday and Friday - please wear P.E. kit on these days.

25th March - Birch Class Outdoor Activity Day

Birch Tour of the River Bovey - Monday 31st March

Home learning -

Reading for at least 10 minutes daily.

Please practice for at least 10 minutes 3 times a week

Spelling - Spelling checks are on Friday

Times tables - Times table checks are on Monday

Optional Homelearning projects- in Homelearning books

Willows and Reception Class



Wow another fab fortnight! We had a brilliant emersion in science for our science week last week and had lots of hands on opportunities to explore and find out about a range of topics. It was great to hear from our visitors about what it is like to work in different areas of science too. This week we have been finishing of our innovated stories of Fatou fetch the Water in English, and continuing our maths topic on Multiplication and Division. In Reception we have been exploring all things Frog and Tadpole alongside our new non-fiction text. We have been exploring counting beyond 20 in our maths too.

We had a fantastic trip yesterday at Dyno Climbing in Buckfastleigh and the children all did themselves and us immensely proud. They worked tirelessly to push themselves a little further each time they climbed and showed tremendous resilience throughout. Well Done Willows, we are all so proud of you!









Saplings



Our Theme for the past fortnight has been frog life cycles, from tadpole to frog along with Oi frog being our books that we have read. The children have all taken part in activities centred around the frog life cycle.

In PHSE, healthy me, we have spoken about the different factors that support their overall health and wellbeing. Like making Healthy choices, the importance of physical activities, healthy eating, toothbrushing and lots of good sleep.

The children enjoyed choosing their own fruit to make a fruit salad.

In P.D The children have enjoyed picking up plastic bugs with tweezers strengthening their fine motor skill, tipping and pouring in their water play and exploring using tools like spanners and screwdrivers whilst play building with the construction set.

In Maths the children have showed super counting skills whilst counting buttons and teddies into each number labelled pot. Well done!

Saplings are all super stars.













Toddler Group!





Come and join us for Toddler Group, running from 9.15-10:30am every Wednesday morning.

This week we have been looking at frog cycles and we made some very fun hats, which we all put on and hopped around like a frog in!

Tell your friends and family to spread the word.

£1.50 a session. Hennock Primary school. Please call or email if you have any questions;

adminhennock@thelink.academy

01626 833233.

We look forward to welcoming you to our little school.

PTFA Message



Dear all,

Firstly, Thank you so much to the parents and teachers who came to the open meeting the other week.

Lots of good discussion had and dedications made! The PTFA have recently purchased more equipment to aid learning within the classroom. Items include specialised pens, foot rocker boards, wobble cushions and gym balls. Mrs Luxton has advised that the are being very helpful!

Remember non uniform day on Friday 28th March in exchange for Easter eggs which we will use for raffle and bingo prizes at our EASTER FAIR after school on Wednesday 2nd April. Lots to look forward to.

Many thanks for your ongoing support.

Sarah and team.Hennockptfa@gmail.com

Star of the Week



Star Learner of the Week:

14th March

Ash: Rafferty **Birch:** Freddie **Willows:** Emelia

Dojo Points:

Ash: Taya **Birch:** Layla

Achievosaurus: Sophie

Playground Hero: Aiden

Pride of School: Layla

Values Star: Phoebe and Agnes

Star Learner of the Week:

21st March

Ash: Nancy **Birch:** Jessica **Willows:** Maddie

Dojo Points:

Ash: Fyrstan **Birch:** Mila and Sophie

Achievosaurus: Ronnie, Oliver, Benji and Alice

Playground Hero: Millie

Pride of School: Emilia

Values Star: Ralph and Asa

Key Dates

PE with Mr Pierce Every Monday

Willows - Thursday

Birch - Fridays

Ash - Wednesdays

- **Music with Pat on Thursdays for Ash and Birch**
- **Birch Class Trip to Haven banks - Tuesday 25th March**
- **Non School Uniform for PTFA Egg collection - Friday 28th March**
- **River walk for Birch Class and Birch class drop in - Monday 31st March**
- **Cricket Engagement Day for the whole School and Ash Class Trip to Torquay Museum after Cricket session - Tuesday 1st April**
- **Easter Fair from 3pm - Wednesday 2nd April**
- **Ash and Birch class Music Performance with Pat - Thursday 3rd April**
- **Easter Service at the church and last day of Term - Friday 4th April**
- **Term commences on Tuesday 22nd April**
- **Teign School Parent Information Evening - Thursday 5th June (More info to follow from Teign School)**
- **Year 5 Taster Day at Teign School - Thursday 10th July (More info to follow from Teign School)**
- **Year 6 Transition Days at Teign School - Thursday 26th & Friday 27th July (More info to follow from Teign School)**

School Attendance

Attendance this Fortnight:

Whole School 96.7%

Ash 98.6%

Birch 98.8%

Willows 95.7%

Attendance Matters



PENALTY NOTICE FINES FOR SCHOOL ATTENDANCE ARE CHANGING

1 FIRST OFFENCE
The **first** time a Penalty Notice is issued for Term Time Leave or Irregular Attendance the amount will be: **£160 per parent, per child. This will be reduced to £80 per parent, per child if paid within 21 days.**

2 SECOND OFFENCE (WITHIN 3 YEARS)
The **second** time a Penalty Notice is issued for Term Time Leave or Irregular Attendance, the amount will be: **£160 per parent, per child, to be paid within 28 days. No reduced rate will be offered.**

3 THIRD OFFENCE AND ANY FURTHER OFFENCES (WITHIN 3 YEARS)
The **third** time an offence is committed for Term Time Leave or Irregular Attendance a Penalty Notice will not be issued and the case will be presented straight to the Magistrates' Court.
Magistrates' fines can be up to £2500 per parent, per child. Cases found guilty in Magistrates' Court can show on a parent's future DBS certificate due to failure to safeguard a child's education.



Safeguarding



Key contacts and useful links

Front Door (formerly MASH) main number: 0345 155 1071

Children's Social Care Emergency Duty Team (out of hours) – 0845 6000 388

Front Door email: mashsecure@devon.gov.uk¹

Our Safeguarding Lead is Sarah Reddington and our Deputy Safeguarding Lead is Issy Fraser. If you are concerned about a child's wellbeing, please contact the school or in non-school hours contact Front Door (formally known as MASH) on

0345 155 1071

¹<mailto:mashsecure@devon.gov.uk>